

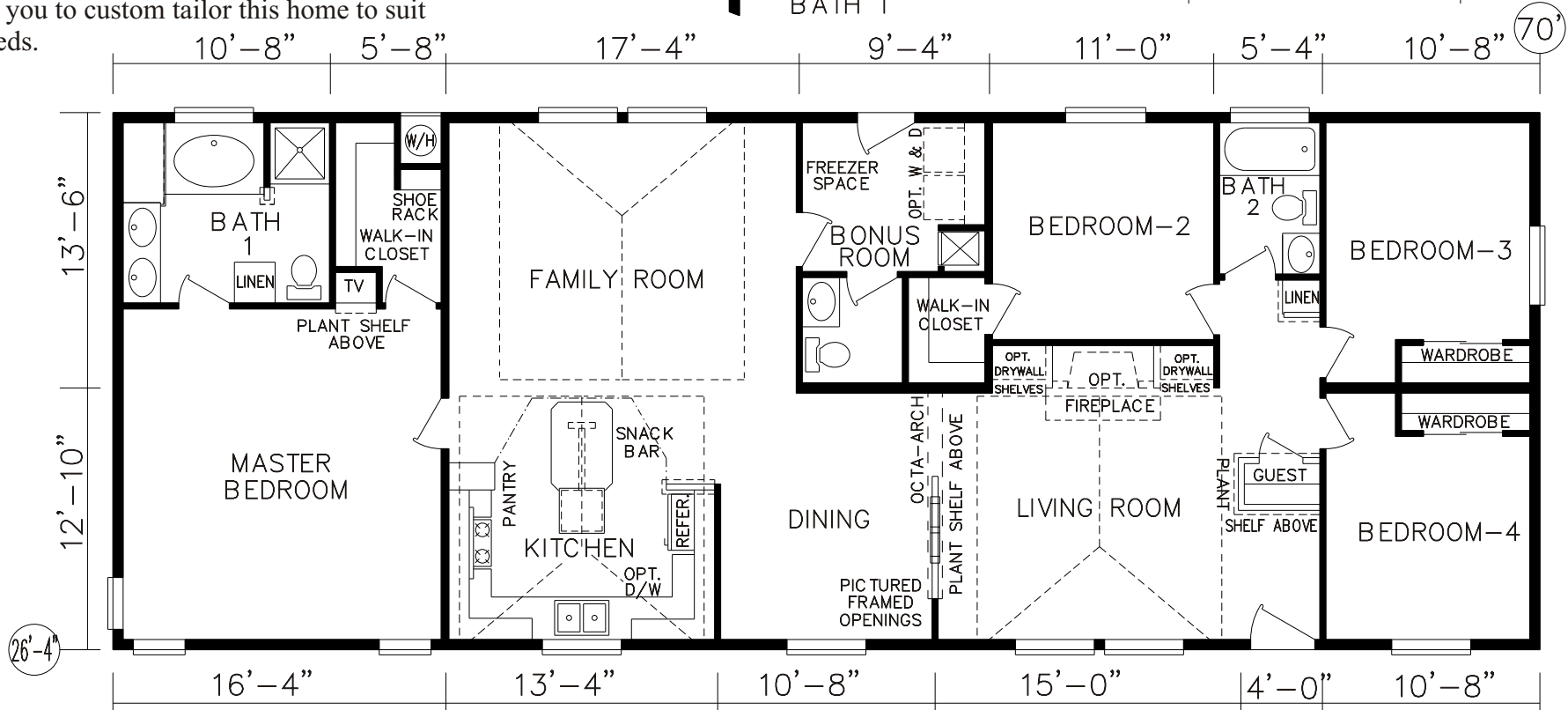
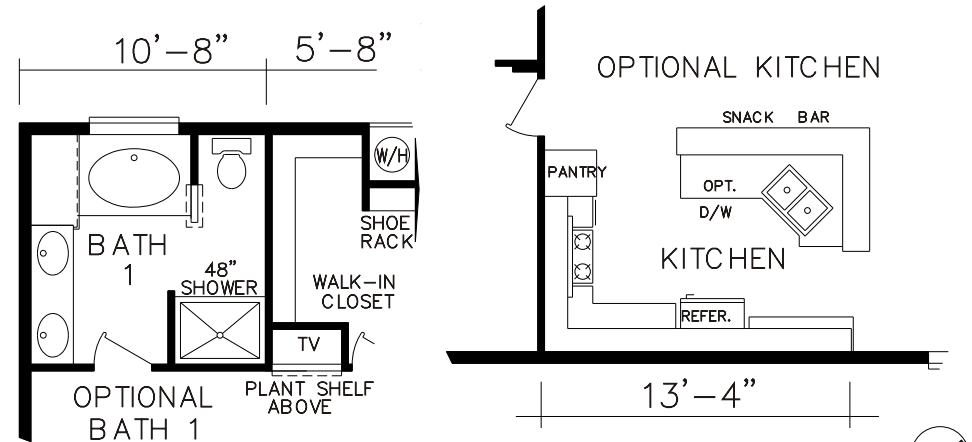


SILVERCREST
WESTERN HOMES CORPORATION
Westwood

W-54 Approx. 1843 SQ. FT.

This beautiful home with four Bedrooms and two & 1/2 Baths is one of Silvercrest's largest two section plans. It features separate Living and Family Rooms, vaulted ceilings, and architectural detailing throughout the interior living spaces. Luxury, style and convenience abound in the Kitchen and Master Bath. Silvercrest's flexibility allows you to custom tailor this home to suit your personal needs.

Simply
BUILDS THE BEST





WESTERN HOMES CORPORATION

299 North Smith Avenue • P.O. Box 759 • Corona, Ca. 92878-0759

(909)734-6610 • (800)382-0709

Internet: <http://www.silvercrest.com> • e-mail: info@silvercrest.com

Westwood Features

Construction

- ▲ 2x6 exterior wall framing, 16" on center with timber headers
- ▲ 2x6 transverse floor joists on 16" centers
- ▲ Nominal 4/12 roof pitch
- ▲ Vented attic
- ▲ 20 lb. roof load
- ▲ White vinyl framed dual glazed low-E2 windows with mullions
- ▲ 100 amp. Electrical service
- ▲ Water shut-off valves at sinks and toilets
- ▲ 5/8" fire rated drywall ceilings
- ▲ Tuffpex waterlines
- ▲ Insulation values Zone II:
 - R-11 Fiberglass Insulation in floors
 - R-19 Fiberglass Insulation in exterior walls
 - R-33 Insulation in ceiling
- ▲ Zone III additional insulation standards:
 - R-22 Fiberglass Insulation in floors

Exterior

- ▲ Semi-gloss 2 or 3-color exterior
- ▲ Class "A" fire rated composition roofing, with 20 year manufacturer's limited warranty
- ▲ G.F.I. protected patio receptacles (2)
- ▲ 6-panel metal insulated entry door
- ▲ Cottage type rear door (inswing)
- ▲ Full eave on front door side (26' wides only)
- ▲ Optional 12" full eaves on 24 wides
- ▲ Minimum eave on rear door side (on 13'6" floor)
- ▲ 16" overhang on front and rear (26'-4" wides only)
- ▲ Optional covered Porch/Deck (per plan)
- ▲ Optional "Dormer Skylights" (per plan)

Appliances

- ▲ Whirlpool "White on White" appliances: 30" gas freestanding range, digital clock, window, pilotless ignition; 15 cu. Ft. frost free refrigerator
- ▲ 30 gallon gas water heater
- ▲ Gas downflow heating system (A/C ready)

Utility

- ▲ 100 amp electrical service
- ▲ Freezer space (per plan)
- ▲ Gas flex line
- ▲ Rear door with dual glazed windows & interior mini blind
- ▲ Plumb/wire for washer/ dryer
- ▲ Shut off valves throughout

Baths

- ▲ Corner tub with obscure tempered window (per plan)
- ▲ 36" stall shower with enclosure (per plan)
- ▲ 60" Tub/shower in Bath #2 (except 20' wides)
- ▲ 3-Drawer bank - Master Bath
- ▲ 28" wide passage doors (except 20' wides)
- ▲ Linen storage (per plan)
- ▲ Power exhaust fans both baths
- ▲ Medicine cabinet (Master Bath)

General Interior

- ▲ Vaulted ceilings throughout
- ▲ Architectural plant shelves where indicated
- ▲ "Octa-Arch" openings where indicated
- ▲ Finished 1/2" drywall throughout
- ▲ Hand textured knock down ceilings throughout

- ▲ Group II carpet standard in all areas except Kitchen, Bath 1, Bath 2 & Utility
- ▲ 1/2" rebond carpet pad
- ▲ Easy clean 1-piece roll goods in Kitchen, Utility, Bath 1 & Bath 2
- ▲ Prehung Colonist passage doors with brass knob hardware
- ▲ Curio cabinet with glass doors (per plan)
- ▲ Option buffet with glass doors
- ▲ Mini blinds all rooms (except baths)

Kitchen

- ▲ Raised panel prefinished cabinet doors (with hardware)
- ▲ Interior lined cabinetry and drawers
- ▲ Brushed finish steel sink
- ▲ Drop edge Formica® countertops with backsplash
- ▲ Pantry closet or cabinet (most plans)
- ▲ Crown moulding accents overhead cabinets



NEW "Smart Choice" Options

- ▲ **Metlund D' mand hot water recirculation system (saves water and energy)**
- ▲ **All Steel Perimeter Framed "Super Floor"**
- ▲ **Sun Star Tubular Skylights (Saves Energy)**
- ▲ **Under Counter Water Filtration System in Kitchen**

For More Information click "Smart Choice" button on home page

Manufacturer's Notes

Due to our continuing program of product improvement and federal code requirements, specifications and prices are subject to change without notice. Silvercrest Western Homes Corporations reserves the right to improve models without incorporating these changes in similar models produced at an earlier date. Dimensions shown and square footage are approximate. Consult factory for specific dimensional foundation plans. Illustrations are artist's concepts.